

AerPOS

15inch Fanless POS System



FEC

AerPOS

We aim to exceed your expectations by providing high quality, reliable products with state of the art designs.

AerPOS is an elegant fanless system, designed to be used in the toughest retail and hospitality environments. It is a very durable and compact system that fits beautifully on any point of sale counter. The modular design features also ensures high serviceability.

Add-on Devices

All AerPOS add-on devices use a USB interface for reliability, simple installation and maintenance.

USB I/O is on the right side of the display



Features



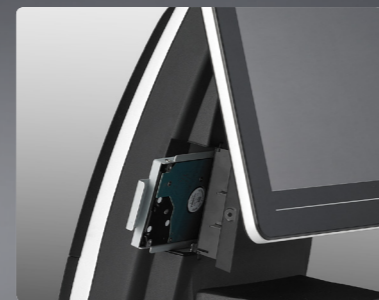
OSD Controls: Display brightness, display power on/off



Ventless design keeps dust and debris out of the system.



Standard Colors: Black + Silver; Black + Red; White + Silver



One-step operation for quick access to hard disk or SSD



The display can be easily removed for quick and efficient maintenance.



The small footprint helps save space and improves flexibility for the design in the store.

Peripherals



The integrated customer display can be turned and tilted for the best viewing angle.



11.6inch second display with bracket



15inch second display (pole type)



Customer Display	11.6 inch 2nd Display	15inch 2nd Display
 <ul style="list-style-type: none"> • LCD w/ LCD Backlight • 25-30nits 	 <ul style="list-style-type: none"> • Max resolution: 1366 x 768 • 200 nits 	 <ul style="list-style-type: none"> • Max resolution: 1024 x 768 • Option of 250 / 450nits

Specifications

Model	
AP-3435	
Processor	Intel® Atom™ D525, 1M L2 Cache, 1.8GHz
System Memory	1GB Standard, Maximum 4GB (1x204-pin DDR3)
Power Supply	90W (12V / 7.5A) External Power Adaptor
Storage Device	1 x 2.5" SATA HDD or SSD
Chipset	Intel® GMA 3150
Speaker	Internal Speaker 2W x 2
Construction	Aluminum Die-casting + Plastic + Glass
Housing Color	Black with Silver Trim; Black with Red Trim; White with Silver Trim
Touch LCD Display	
Size / Resolution	15" TFT-LCD / 1024 X 768
Brightness (Backlight Type) & Touch Screen	250 cd/m ² (CCFL); 5-Wire Resistive Touch
	350 cd/m ² (LED) with Tempered Glass; Projected Capacitive Touch
I/O Ports	
Serial Port	3 x External: COM1, COM2 (DB9), COM4 (RJ45)
USB Port	5 x External (4 Rear + 1 Side)
Cash Drawer Port	1 x RJ11 (12V)
Printer Port	1 x Bi-directional Parallel Port
Keyboard / Mouse	1 x PS/2
LAN Port	1 x RJ45 Giga LAN
Audio Port	1 x Line Out
Video Port	1 x VGA
DC Output	1 x 12V DC Jack 2.5 mm
Optional I/O Board	
Type A	2 x RJ45
Type B	2 x USB
OS Supported	
Windows	Windows XP, POSReady 2009, Windows 7, POSReady 7
Physical Dimensions	
Dimensions (W x H x D)	370 x 360 x 222 mm
Carton Dimensions (W x H x D)	450 x 480 x 310 mm
Weight	7.1kg (Net), 9.1kg (Gross)